

# COMPOZITE DAVIT CRANE

Individually tested and certified at 125%



OZ1200DAV  
[PATENTED]

Boom Weight  
43lbs.

1200 lbs. Capacity

## Features

### • Boom/Extension and Mast made of Advanced Composite Material

- Light weight, about 40% lighter than steel
- Corrosion resistant
- Metal components mil-spec zinc plated
- External handle helps rotate crane under load
- 4 position boom
- Ratchet screw jack adjusts boom under load giving you infinite range of lift
- 360 degree rotation of crane on sleeve bearing
- No tools required for installation
- DIN-Rated hand winch equipped standard with a load holding weatherproof Weston brake (Cable assembly sold separately)
- Hand winch accepts two different cable termination points: swaged ball fitting or bare end cable
- Quick connect winch handle with power drill adapter included
- Pedestal or Socket bases sold separately (comes with mounting template)
- Smart Latch technology at boom/mast connection

\*AC and DC power winches available. See page 19.

\*Refer to page 24 for base options

Mast Weight  
30lbs.

OZPED1 base shown  
See available bases on page 24  
\*Bases sold separately



### Steel Wire Rope (For manual winch)

|              |             |                                |
|--------------|-------------|--------------------------------|
| OZGAL.19-80B | 3/16" x 80' | Galvanized cable assembly      |
| OZSS.19-80B  | 3/16" x 80' | Stainless steel cable assembly |
| OZGAL.25-55B | 1/4" x 55'  | Galvanized cable assembly      |
| OZSS.25-55B  | 1/4" x 55'  | Stainless steel cable assembly |

All cable assemblies come with swaged ball and swivel hook with latch. **Custom cable length available.**  
3/16" - 80 ft max. length • 1/4" - 55ft max. length

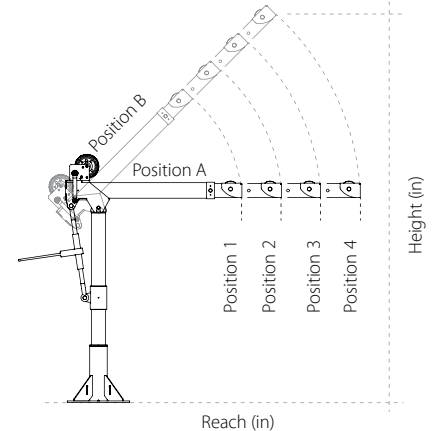
### Steel Wire Rope (For manual and power winch)

|             |             |                                |
|-------------|-------------|--------------------------------|
| OZGAL.19-90 | 3/16" x 90' | Galvanized cable assembly      |
| OZSS.19-90  | 3/16" x 90' | Stainless Steel cable assembly |
| OZGAL.25-45 | 1/4" x 45'  | Galvanized cable assembly      |
| OZSS.25-45  | 1/4" x 45'  | Stainless Steel cable assembly |

All cable assemblies come with swaged ball and swivel hook with latch. **Custom cable length available.**  
3/16" - 90 ft max. length • 1/4" - 45ft max. length

Crane  
weighs  
only  
83 lbs.

One person set up.  
No tools required for installation.  
Portable ultra lightweight.



### Pedestal Base Boom Position A:

Boom Position 1: Height 50 Reach 36

Boom Position 2: Height 50 Reach 46

Boom Position 3: Height 50 Reach 56

Boom Position 4: Height 50 Reach 66

### Pedestal Base Boom Position B:

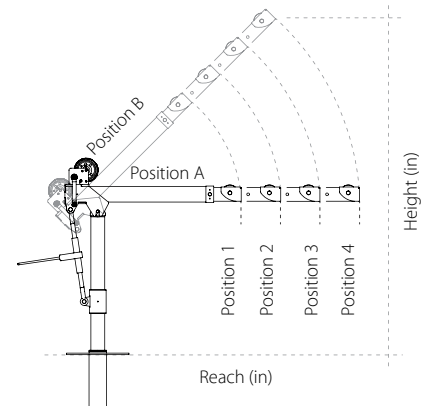
Boom Position 1: Height 74 Reach 22

Boom Position 2: Height 81 Reach 29

Boom Position 3: Height 88 Reach 36

Boom Position 4: Height 95 Reach 43

\*Dimensions are for reference only  
and subject to change without  
notice.



### Socket Base Boom Position A:

Boom Position 1: Height 37 Reach 36

Boom Position 2: Height 37 Reach 46

Boom Position 3: Height 37 Reach 56

Boom Position 4: Height 37 Reach 66

### Socket Base Boom Position B:

Boom Position 1: Height 61 Reach 22

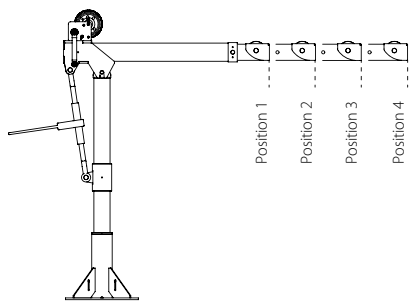
Boom Position 2: Height 68 Reach 29

Boom Position 3: Height 75 Reach 36

Boom Position 4: Height 82 Reach 43

\*Dimensions are for reference only  
and subject to change without  
notice.





## Load Ratings OZ1200DAV

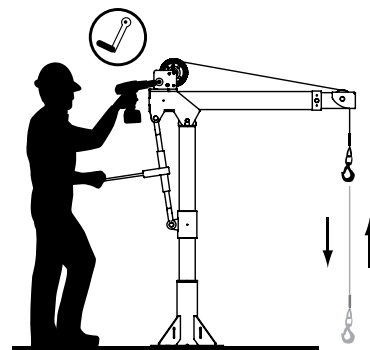
\*Table based on 1/4 inch wire rope. 3/16" cable will be lower.

| Load Ratings     | 1st. Layer | Mid. Drum | Full Drum |
|------------------|------------|-----------|-----------|
| Position 1 (lbs) | 1200       | 875       | 550       |
| Position 2 (lbs) | 900        | 875       | 550       |
| Position 3 (lbs) | 700        | 700       | 550       |
| Position 4 (lbs) | 400        | 400       | 400       |

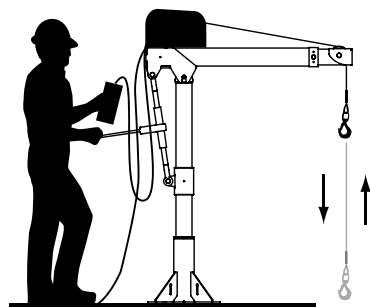
| 3/16" Cable (ft) | Boom Position 1 (lbs) | Boom Position 2 (lbs) | Boom Position 3 (lbs) | Boom Position 4 (lbs) |
|------------------|-----------------------|-----------------------|-----------------------|-----------------------|
| 6                | 800                   | 800                   | 700                   | 400                   |
| 14               | 800                   | 800                   | 700                   | 400                   |
| 22               | 800                   | 800                   | 700                   | 400                   |
| 31               | 800                   | 800                   | 700                   | 400                   |
| 41               | 775                   | 775                   | 700                   | 400                   |
| 52               | 725                   | 725                   | 700                   | 400                   |
| 64               | 650                   | 650                   | 650                   | 400                   |
| 77               | 625                   | 625                   | 625                   | 400                   |
| 90               | 550                   | 550                   | 550                   | 400                   |

| 1/4" Cable (ft) | Boom Position 1 (lbs) | Boom Position 2 (lbs) | Boom Position 3 (lbs) | Boom Position 4 (lbs) |
|-----------------|-----------------------|-----------------------|-----------------------|-----------------------|
| 4               | 1200                  | 900                   | 700                   | 400                   |
| 9               | 1025                  | 900                   | 700                   | 400                   |
| 14              | 875                   | 875                   | 700                   | 400                   |
| 20              | 775                   | 775                   | 700                   | 400                   |
| 27              | 700                   | 700                   | 700                   | 400                   |
| 35              | 625                   | 625                   | 625                   | 400                   |
| 43              | 575                   | 575                   | 575                   | 400                   |
| 50              | 550                   | 550                   | 550                   | 400                   |

## Options for faster lowering and raising



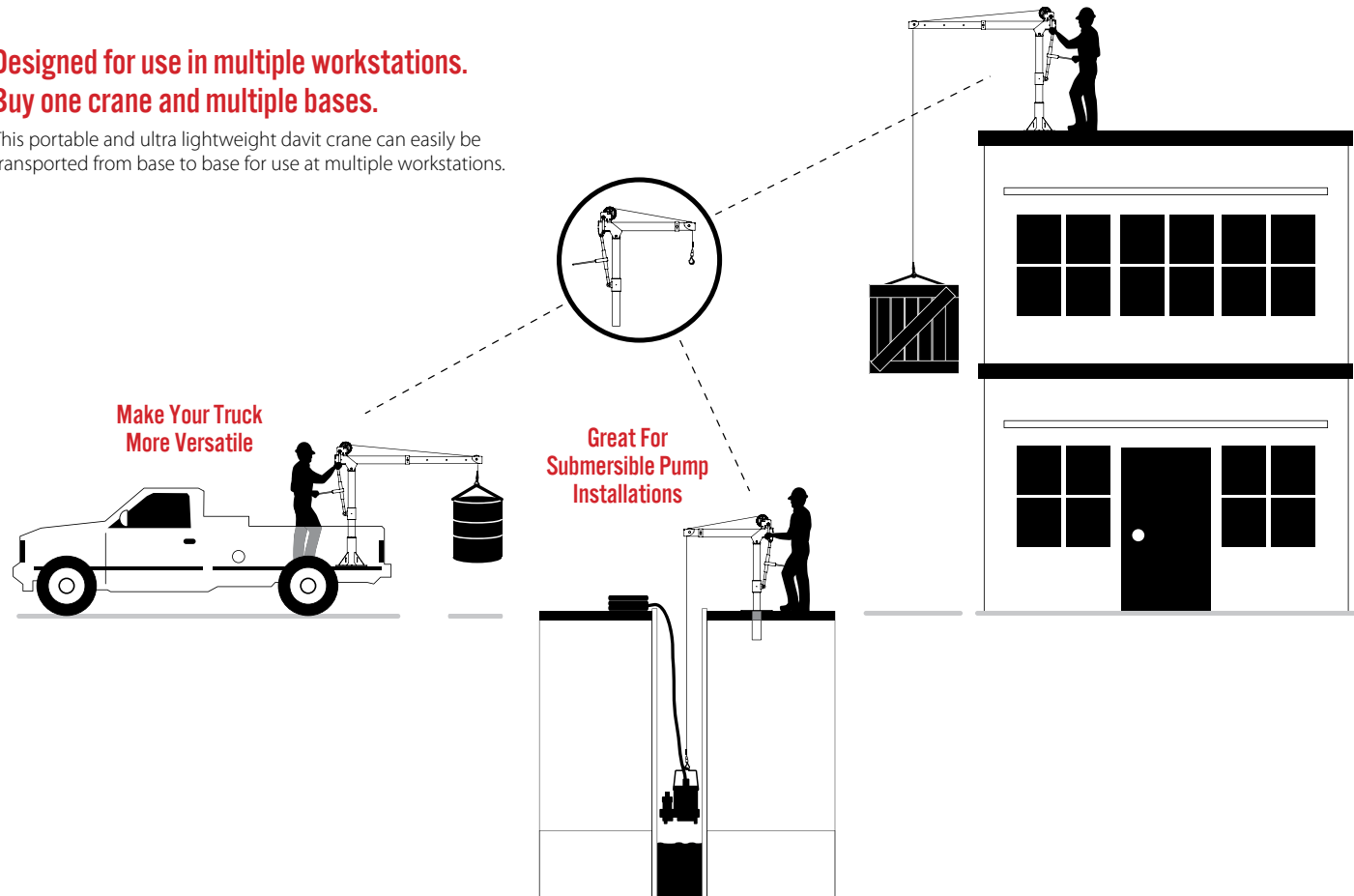
Detach winch handle for drill option.



AC and DC power winches available.  
See page 19.

## Designed for use in multiple workstations. Buy one crane and multiple bases.

This portable and ultra lightweight davit crane can easily be transported from base to base for use at multiple workstations.



# COMPOZITE ELITE DAVIT CRANE

Individually tested and certified at 125%



OZCF1200DAV

Boom Weight  
18lbs.

Crane  
weighs  
only  
37 lbs.

1200 lbs. Capacity

## Features

- Carbon fiber / High-strength aluminum construction
- Corrosion Resistant Finish
- Truly Portable Design
- One-Person Assembly (No Tools Needed)
- Manual Din rated CE winch with brake. Includes power drill adaptor
- Synthetic Cable Assembly Available

\*AC and DC power winches available. See page 19.

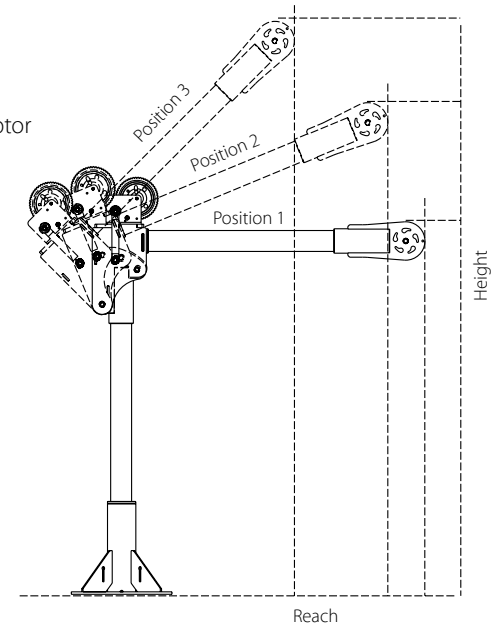
\*Refer to page 24 for base options

## Load Ratings (lbs.)

\*OZCF1200DAV based on 1/4" wire rope.

|                     | 1st. Layer | Mid. Drum | Full Drum |
|---------------------|------------|-----------|-----------|
| Position 1 (0°)     | 500        | 500       | 500       |
| Position 2 (+22.5°) | 700        | 700       | 550       |
| Position 3 (+45°)   | 1200       | 875       | 550       |

Mast Weight  
13lbs.



Position 1, Height 46", Reach 42"

Position 2, Height 62", Reach 32"

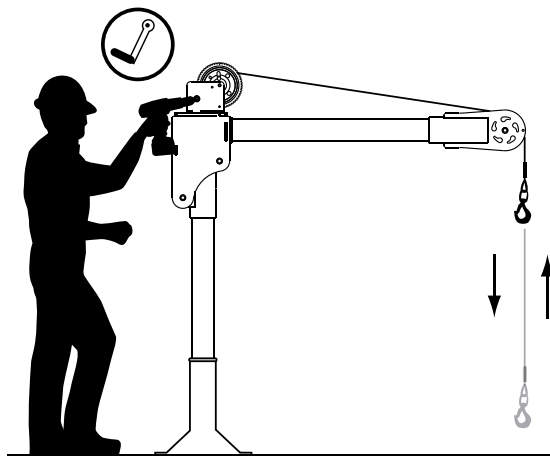
Position 3, Height 74", Reach 20"

2500 lbs.  
CompOZite Elite  
Davit Crane  
Coming Soon!

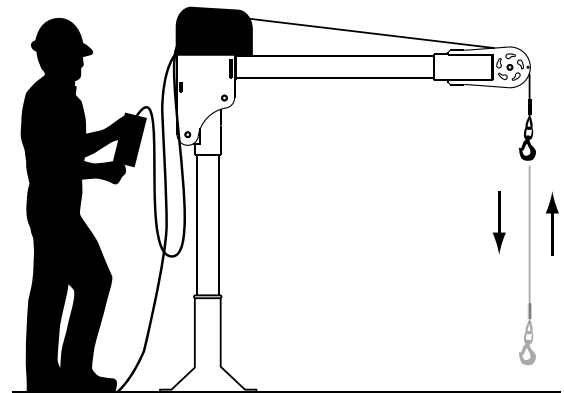
OZPED2 base shown  
See available bases on page 24  
\*Bases sold separately



## Options for faster lowering and raising



Detach winch handle for drill option.



AC and DC power winches available. See page 19.

# STEEL DAVIT CRANE

Individually tested and certified at 125%



OZ1000DAV



**500 lbs., 1000 lbs. and  
2500 lbs. Capacity**

## Features

- 360 degree rotation
- 4 different boom height adjustments
- 500, 1000, and 2500 lb. ratings available
- Manual Din rated CE winch with brake. Includes power drill adaptor
- Zinc plated finish
- AC & DC winch option
- Pedestal or Socket bases sold separately (comes with mounting template)
- Made in USA

\*AC and DC power winches available. See page 19.

\*Refer to page 24 for base options

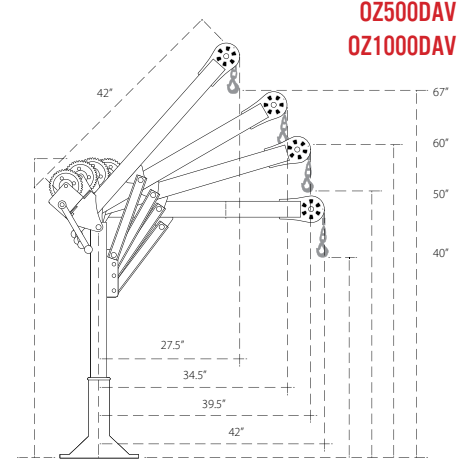
## Load Ratings

\*OZ500DAV based on 3/16" wire rope.

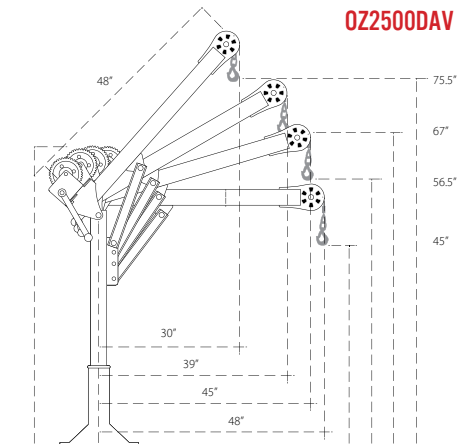
\*OZ1000DAV based on 1/4" wire rope.

\*OZ2500DAV based on 3/8" wire rope.

|                 | 1st. Layer | Mid. Drum | Full Drum |
|-----------------|------------|-----------|-----------|
| OZ500DAV (lbs)  | 500        | 500       | 500       |
| OZ1000DAV (lbs) | 1000       | 875       | 550       |
| OZ2500DAV (lbs) | 2500       | 2000      | 1550      |



OZ500DAV  
OZ1000DAV



OZ2500DAV

OZPED2 base shown  
See available bases on page 24  
\*Bases sold separately

### Steel Wire Rope (For manual winch)

|              |             |                                |
|--------------|-------------|--------------------------------|
| OZGAL.19-80B | 3/16" x 80' | Galvanized cable assembly      |
| OZSS.19-80B  | 3/16" x 80' | Stainless steel cable assembly |
| OZGAL.25-55B | 1/4" x 55'  | Galvanized cable assembly      |
| OZSS.25-55B  | 1/4" x 55'  | Stainless steel cable assembly |

All cable assemblies come with swaged ball and swivel hook with latch. **Custom cable length available.**  
3/16" - 80 ft max. length • 1/4" - 55ft max. length

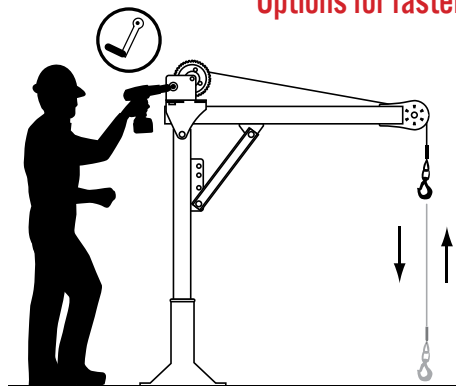
### Steel Wire Rope (For manual and power winch)

|             |             |                                |
|-------------|-------------|--------------------------------|
| OZGAL.19-90 | 3/16" x 90' | Galvanized cable assembly      |
| OZSS.19-90  | 3/16" x 90' | Stainless Steel cable assembly |
| OZGAL.25-45 | 1/4" x 45'  | Galvanized cable assembly      |
| OZSS.25-45  | 1/4" x 45'  | Stainless Steel cable assembly |

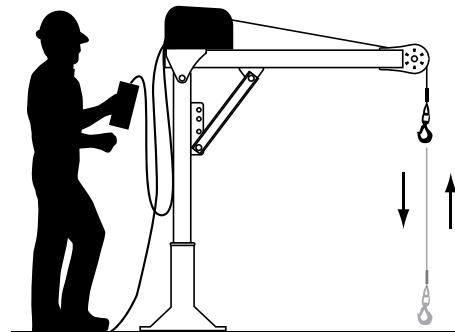
All cable assemblies come with swaged ball and swivel hook with latch. **Custom cable length available.**  
3/16" - 90 ft max. length • 1/4" - 45ft max. length



## Options for faster lowering and raising



Detach winch handle for drill option.



AC and DC power winches available. See page 19.

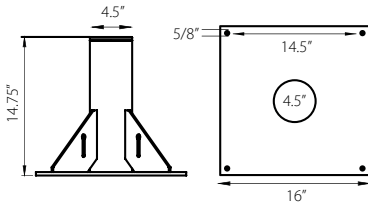
# DAVIT CRANE MOUNTING BASES (Sold Separately)

\*Includes mounting template

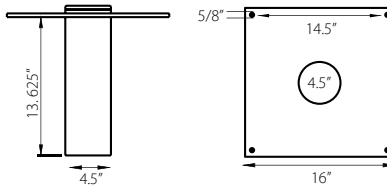


## COMPOZITE DAVIT CRANE - OZ1200DAV

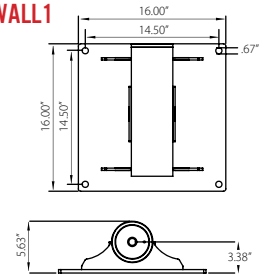
**OZPED1**



**OZSOC1**

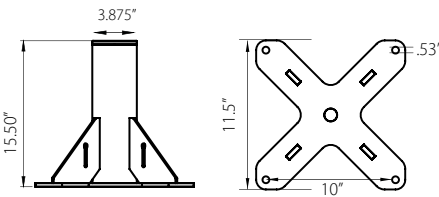


**OZWALL1**

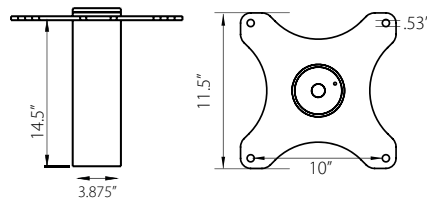


## COMPOZITE ELITE DAVIT CRANE - OZCF1200DAV

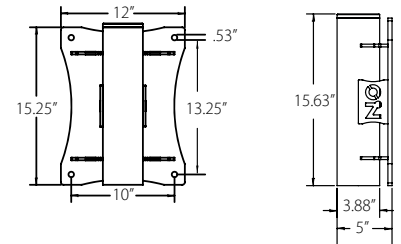
**OZPED2**



**OZSOC2**

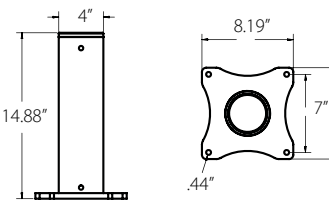


**OZWALL2**

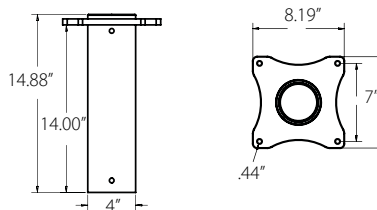


## STEEL DAVIT CRANE - OZ500DAV

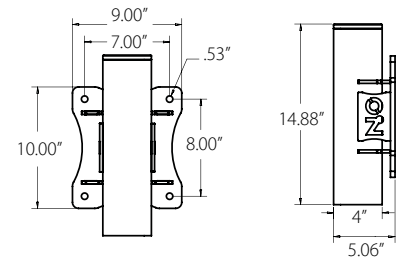
**OZPED3**



**OZSOC3**

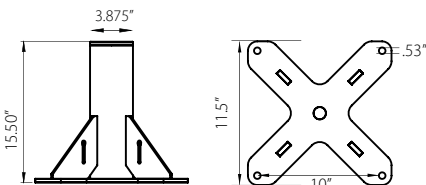


**OZWALL3**

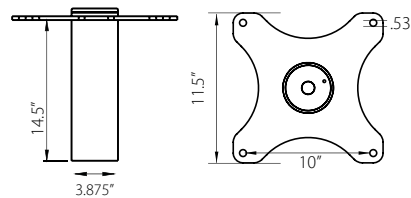


## STEEL DAVIT CRANE - OZ1000DAV

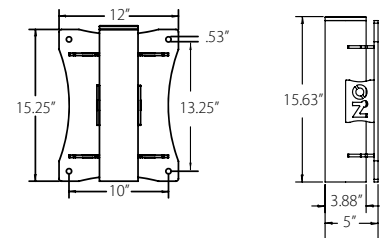
**OZPED2**



**OZSOC2**

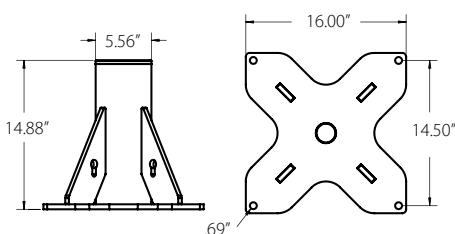


**OZWALL2**

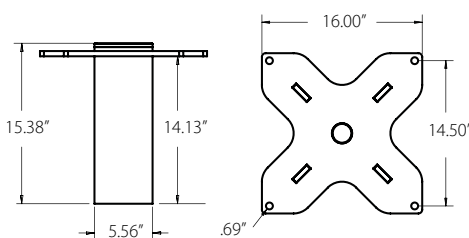


## STEEL DAVIT CRANE - OZ2500DAV

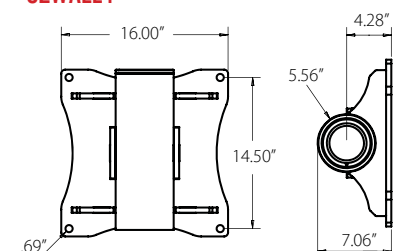
**OZPED4**



**OZSOC4**



**OZWALL4**





## APPLICATION DATA SHEET DAVIT CRANES

P.O. Box 845 | Winona, MN 55987

Tf: (800) 749-1064 | Ph: (507) 474-6250 | Fx: (507) 452-5217  
sales@ozliftingproducts.com | www.ozliftingproducts.com

|                |      |             |       |
|----------------|------|-------------|-------|
| To:            | Fax: | # of Pages: | Date: |
| Email Address: |      |             |       |
| Contact:       |      |             |       |
| Address:       |      |             |       |
| City:          |      | State:      |       |
| Phone:         |      | Zip Code:   |       |
| Fax:           |      |             |       |

Please fill out separate data sheets for each application that the product is used.

### 1. JOB DESCRIPTION:

---

---

---

Quantity Needed: \_\_\_\_\_ Date Needed: \_\_\_\_\_

### 2. WEIGHT OF LOAD:

---

---

---

### 3. HOW FAR IS THE LOAD MOVING?:

---

---

---

### 4. REACH REQUIREMENTS:

---

---

---

### 5. WINCH REQUIREMENTS:

☐ Hand ☐ 115 volt AC ☐ 12 volt DC

---

---

### 6. BASE REQUIREMENTS:

☐ Pedestal Base ☐ Socket Base ☐ Wall Mount Base

☐ Base Extension

---

---

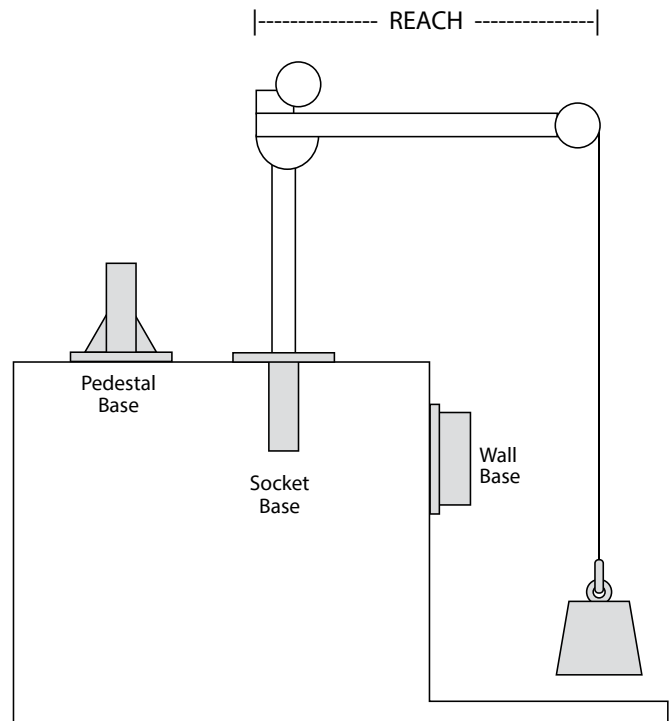
### 7. ENVIRONMENT:

---

---

---

HOW DID YOU HEAR OF US? \_\_\_\_\_



Base installation is purchaser's responsibility.  
OZ Lifting recommends consulting a civil  
engineer or other qualified professional.

**Individually tested and certified at 125%. Cable and bases sold separately.**

*OZ Lifting products are not for lifting up people or objects over people.*