

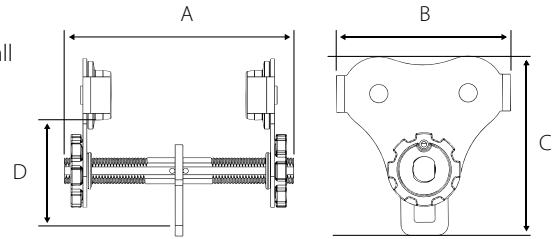
OZ PUSH BEAM TROLLEY USA



OZ1PBTA
[Patent Pending]

Features

- Fastest adjusting trolley requiring no tools to install
- Lightweight robust construction
- ROHS compliant zinc plated finish
- Glow in the dark decals
- Fits to most I, S, and W-Beams
- Durable baked enamel provides protection
- Precision ball bearing trolley wheels
- Side plates protect trolley wheels
- Anti-drop plate
- Stainless steel ID tag
- Individual test certificate and serial number



Standards - ASME



	OZ05PBTA	OZ1PBTA	OZ2PBTA	OZ3PBTA
Safe working load (lbs)	1,000	2,000	4,000	6,000
Adjustable flange width (in)	2.52-8.00	2.75-8.00	3.75-8.0	3.75-8.0
Max Flange Thickness (in)	1.12	1	1.5	1.75
Product dimensions	A	12.25	11	14
	B	8.3	10.2	12
	C	8.5	9.8	11.9
	D	5	5.5	8.5
Minimum radius curve (ft)	2.75	3.35	4.5	5
Net weight (lbs)	16	26	45	80

***12" and 16" inch rods available for OZ05PBTA and OZ1PBTA**

***See wheel and bail dimensions on page 16.**

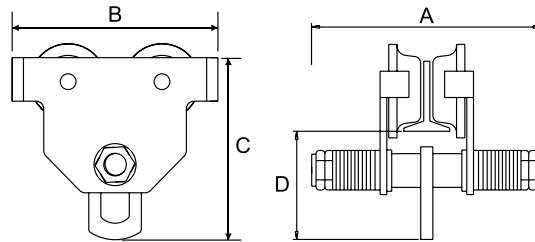
*Dimensions are for reference only and subject to change without notice.



OZ PUSH BEAM TROLLEY

Features

- Lightweight robust construction
- Fits to most I, S, and W-Beams
- Durable baked enamel paint protection
- Precision ball bearing trolley wheels
- Anti-drop plate
- Stainless steel ID tag
- Individual test certificate and serial number



OZ1PBT

	OZ05PBT	OZ1PBT	OZ2PBT	OZ3PBT	OZ5PBT	OZ10PBT
Safe Working Load (lbs)	1,000	2,000	4,000	6,000	10,000	20,000
Adjustable Flange Width (in)	2.52-8.00	2.52-8.00	2.52-12.00	2.52-12.00	2.52-12.00	4.95-12.00
Max Flange Thickness (in)	1.14	1.50	1.61	1.81	2.28	1.97
Product Dimensions (in)	A	9.75	12.75	17.50	17.31	18.87
	B	8.50	9.45	11.81	13.58	15.55
	C	7.67	8.41	11.26	13.23	15.47
	D	4.33	4.90	6.34	7.28	8.66
Minimum Radius Curve (ft)	2.95	3.28	3.60	4.26	4.59	5.57
Net Weight (lbs)	20	23	37	78	114	198

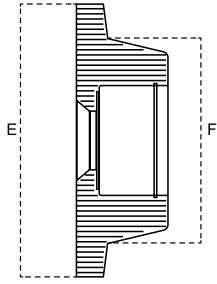
**Standards - CE,
Portions of ASME 30.16**

***See wheel and bail dimensions on page 16.**

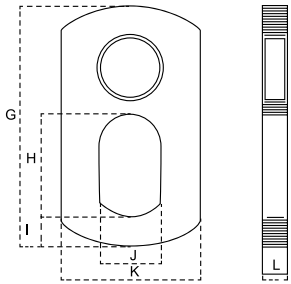
*Dimensions are for reference only and subject to change without notice.



PUSH BEAM TROLLEY WHEELS & BAIL DIMENSIONS



	OZ05PBTA	OZ1PBTA	OZ2PBTA	OZ3PBTA
E (in)	3.25	4.00	4.5	5.75
F (in)	2.38	3.00	3.25	4.38
G (in)	4.38	5.00	6.25	6.88
H (in)	1.50	1.88	2.25	2.5
I (in)	0.63	0.63	0.88	1.0
J (in)	1.00	1.25	1.38	1.5
K (in)	2.25	2.50	3.13	3.5
L (in)	0.38	0.50	0.50	0.63



	OZ05PBT	OZ1PBT	OZ2PBT	OZ3PBT	OZ5PBT	OZ10PBT
E (in)	2.83	3.50	4.00	5.79	6.30	7.45
F (in)	2.05	2.48	2.68	4.34	4.81	5.95
G (in)	4.05	4.21	5.31	7.09	8.67	11.23
H (in)	1.50	1.50	2.01	2.96	3.75	4.73
I (in)	0.75	0.75	0.51	1.03	1.38	1.78
J (in)	1.25	1.25	1.02	1.78	2.37	3.23
K (in)	2.25	2.25	2.76	3.94	4.73	5.91
L (in)	0.39	0.39	0.47	0.63	0.79	0.99

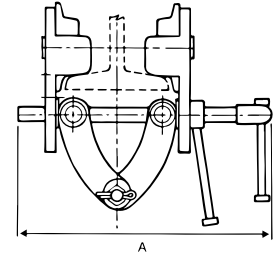
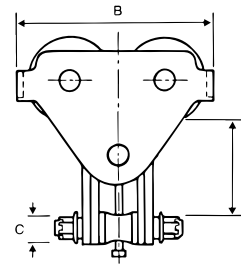
OZ QUICK ADJUST TROLLEY

OZ1QAT



Features

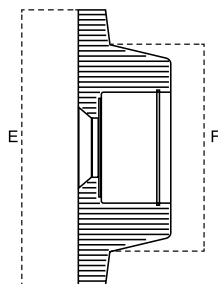
- Lightweight, robust construction.
- Super-quick adjustment to most I, S, and W-Beams (see measurements below)
- Safety handle lock
- Durable baked-enamel paint protection
- Precision ball bearing trolley wheels
- Anti-drop plate
- Stainless steel ID tag
- Individual test certificate and serial number



**Standards - CE,
Portions of ASME 30.16**

	OZ05QAT	OZ1QAT	OZ2QAT	OZ3QAT	OZ5QAT	OZ10QAT
Safe Working Load (lbs)	1,000	2,000	4,000	6,000	10,000	20,000
Adjustable Flange Width (in)	3.63-7.12	2.48-8.27	2.99-8.27	2.99-8.27	3.94-12.01	6.89-12.01
Max Flange Thickness (in)	1.44	2	2.17	1.42	3.07	2.13
Dimensional Information (in)	A	11.75	13.98	14.17	14.17	18.50
	B	8.00	9.53	11.06	12.91	14.84
	C	.75	.88	.88	.97	1.11
(min-max)	D	5.87-7.12	5.75-7.22	6.06-7.22	6.35-7.97	8.81-10.61
Minimum Curve Radius (ft)	3.28	3.28	3.61	4.26	4.60	5.57
Net Weight (lbs)	13	25	38	57	102	205

*Dimensions are for reference only and subject to change without notice.



	OZ05QAT	OZ1QAT	OZ2QAT	OZ3QAT	OZ5QAT	OZ10QAT
E (in)	3.22	4.02	5.00	5.79	6.30	7.34
F (in)	2.28	2.96	3.55	4.34	4.81	5.96

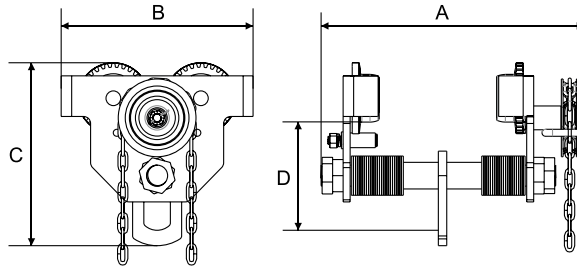
*Dimensions are for reference only and subject to change without notice.



OZ GEARED BEAM TROLLEY

Features

- Lightweight robust construction
- Fits to most I, S, and W-Beams
- Durable baked enamel paint protection
- Gearing for positive load positioning
- Precision ball bearing trolley wheels
- Anti-drop plate
- Stainless steel ID tag
- Individual test certificate & serial number

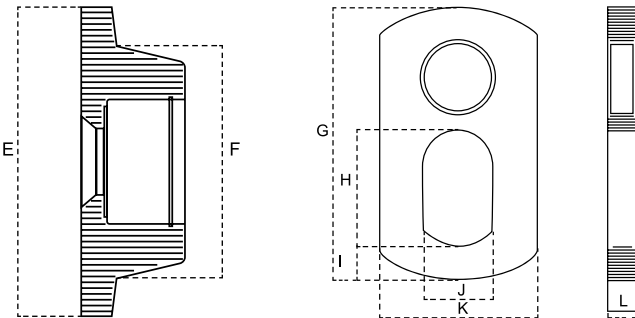


OZ5GBT

	OZ1GBT	OZ2GBT	OZ3GBT	OZ5GBT	OZ10GBT	OZ20GBT	OZ30GBT
Safe Working Load (lbs)	2,000	4,000	6,000	10,000	20,000	40,000	60,000
Adjustable Flange Width (in)	2.52-7.99	3.46-7.99	3.46-7.99	3.46-7.99	4.88-7.99	5.39-12.99	5.83-12.99
Max Flange Thickness (in)	1.50	1.61	1.81	2.28	1.97	2.17	2.36
Product Dimensions (in)	A	14.96	15.20	16.38	17.09	15.59	26.54
	B	9.45	10.63	12.60	13.62	16.77	20.55
	C	8.41	10.28	12.48	15.08	15.75	19.65
	D	4.90	6.08	7.30	9.09	8.31	9.96
Minimum Radius Curve (ft)	3.28	4.27	4.92	5.25	8.3	11.48	14.76
Net Weight (lbs)	28.66	41.89	61.73	90.39	182.98	405.65	650.36
Standard Length of Hand Chain (ft)	9.00	9.00	9.00	9.00	9.00	9.00	9.00
Effort to Pull (lbs)	10.13	18	29.25	23.75	41.85	18	24.08
Chain pulled to move one foot (ft)	3.80	3.90	3.70	4.02	18.90	47.83	31

Standards - CE,
Portions of ASME 30.16

*Dimensions are for reference only and subject to change without notice.
*Available in 50 and 100 Ton please contact for specifications. Special order.



	OZ1GBT	OZ2GBT	OZ3GBT	OZ5GBT	OZ10GBT	OZ20GBT	OZ30GBT
E (in)	3.50	4.00	5.79	6.30	7.45	10.76	10.76
F (in)	2.48	2.68	4.34	4.81	5.95	7.88	7.88
G (in)	3.86	5.31	7.09	8.67	11.23	12.99	13.19
H (in)	1.46	2.01	2.96	3.75	4.73	5.91	5.91
I (in)	0.51	0.51	1.03	1.38	1.78	2.75	2.75
J (in)	1.02	1.02	1.78	2.37	3.23	4.33	4.33
K (in)	1.91	2.76	3.94	4.73	5.91	9.45	9.45
L (in)	0.39	0.47	0.63	0.79	0.99	1.38	1.18

*Dimensions are for reference only and subject to change without notice.



OZ30GBT

With Gear Reduction
20 T and 30 T